

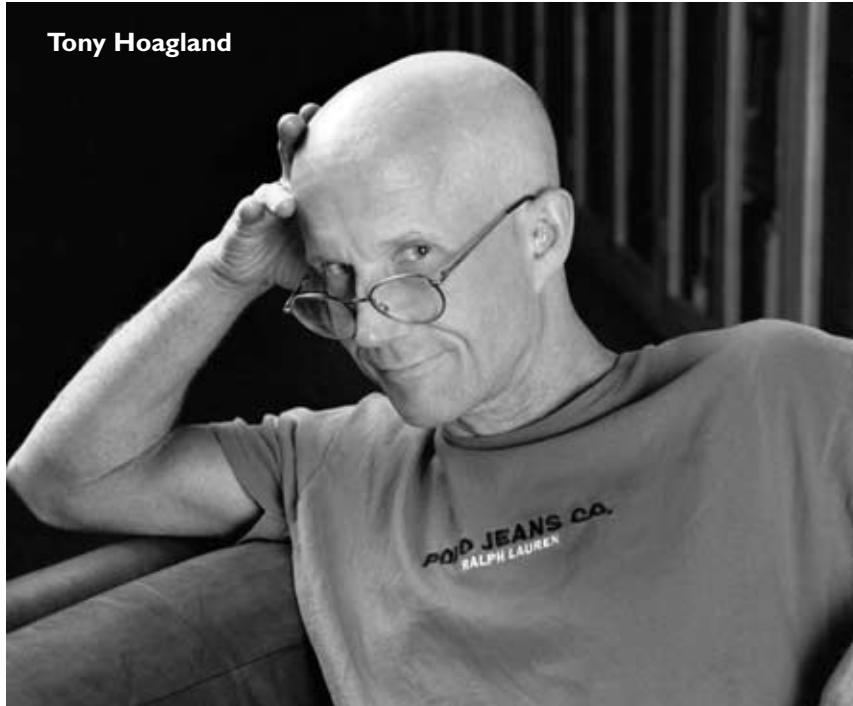
LAMONT POET TONY HOAGLAND

In his introduction to a reading by Tony Hoagland on October 1, the first in this year's Lamont Poetry Series, English instructor Ralph Sneed quoted a student's testimonial to the power of Hoagland's work. "I'm tired of pretty poems. I'm tired of nice," the student had said. "I want Jackson Pollock, not Mary Cassatt." Added Sneed: "Although the structure and associations on Hoagland's canvases might lean toward something more subtly complex than Pollock's impulse and bravado, they are streaked with the same unmistakable grit of immense talent, fierce intelligence and the sort of reciprocated vulnerability between reader and writer that comes only with directness, honesty."

The author of three books, including *Donkey Gospel*, winner of the 1997 James Laughlin Award from the Academy of American Poets, and *Sweet Ruin*, winner of the Brittingham Prize in Poetry, Hoagland is also a renowned teacher, most recently at the University of Pittsburgh.

"The students really loved it all: his irreverence and intelligence, and above all his generosity," says Sneed of Hoagland's reading. "After his visit, a few classes which hadn't been reading his work demanded to do one of his books. His work spread like wildfire after the reading."

Tony Hoagland



BRIAN CROWLEY

pus, including an elaborate simulation of the Exeter admissions and college counseling processes. The trustees admitted five students to the institution, followed their careers at PEA and then counseled them and watched as they were admitted or denied admission by three simulated college admissions committees. The trustees emerged from this experience with a much more comprehensive understanding of the forces that affect admissions decisions at the beginning and end of a student's career at Exeter.

Several committees reported on the 2002–2003 academic and fiscal year. Director of Alumni/ae Affairs and Development Jim Theisen '40, '66 (Hon.) reported that while we are pleased with the plans for the comprehensive campaign, the annual fund fell short of its goal and cash payments on pledges were down in the last fiscal year. This is surely attributable to the decline in the stock market. Despite this, the annual fund raised more than \$5 million and enjoyed 52 percent participation from alumni/ae and

80 percent from current parents, both exceptional numbers.

The auditors reported that the fiscal year closed with a \$9,000 surplus and a clean audit. Given the unusual expenses that last year's harsh winter generated, this is a remarkable accomplishment. Trustee Steve Mandel '74, chair of the investment committee, reported that last year the endowment enjoyed a total investment return of 10.9 percent, considered a tremendous achievement in the current market.