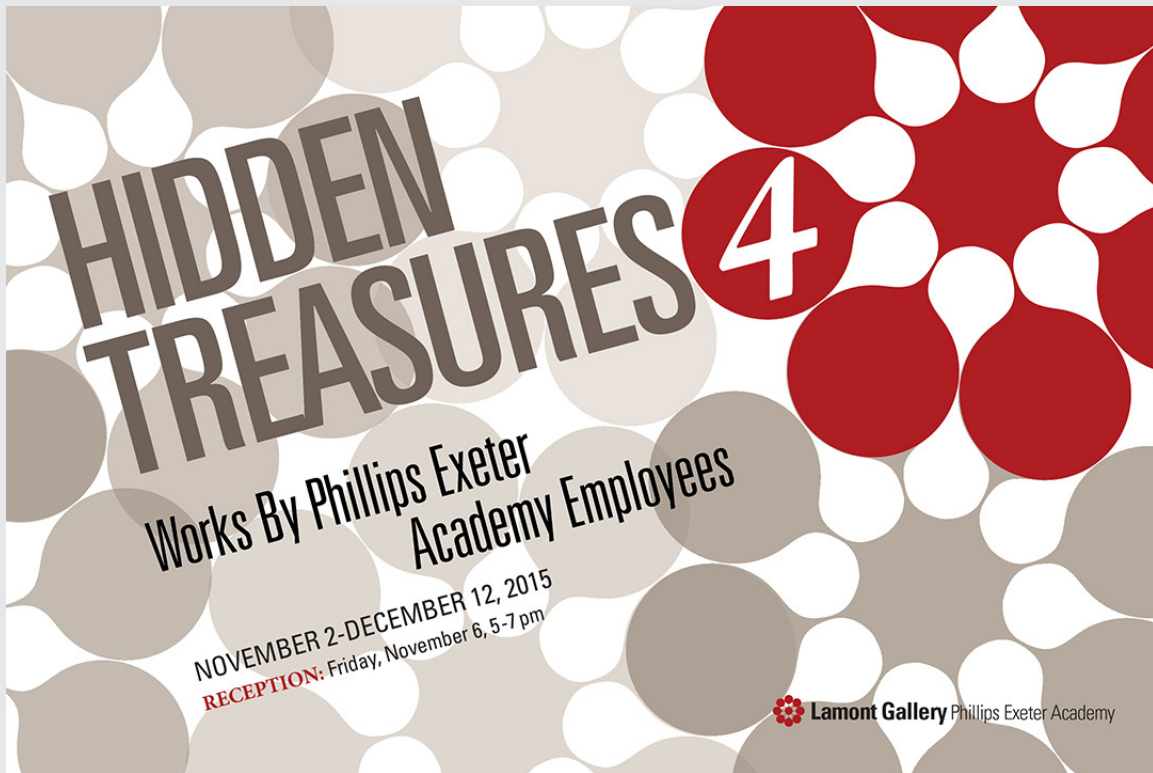




# Lamont Gallery Exhibition Archive

Phillips Exeter Academy, Exeter NH  
603-777-3461 | gallery@exeter.edu

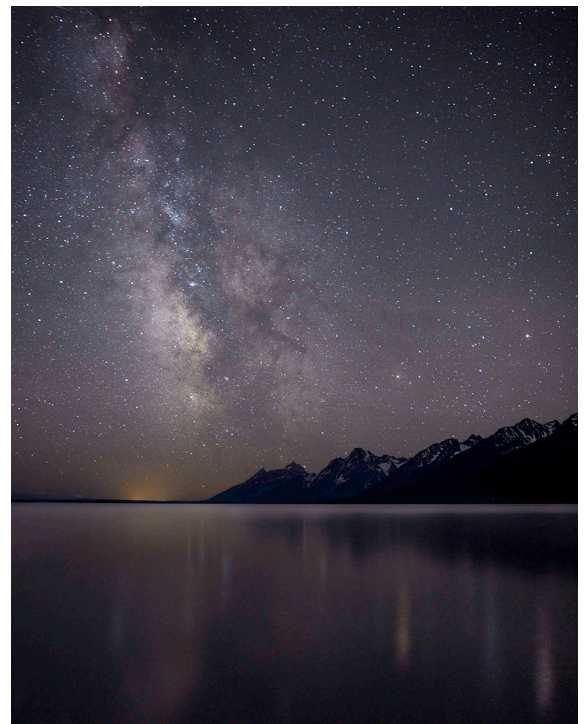
[www.exeter.edu/lamontgallery](http://www.exeter.edu/lamontgallery)



## *Hidden Treasures 4* November 2-December 12, 2015

A 1:64 model of a ship. Spiraled ceramic vases.  
The smallest of hand-knit sweaters. ***Hidden Treasures 4*** celebrates the creative work in a variety of media from Phillips Exeter Academy employees across campus, from departments ranging from Admissions, Theater and Dance, and Institutional Advancement, to Mathematics, Dining Services, and the Office of Multicultural Affairs. Join us and discover the many hidden talents at PEA!

**Jean Farnum** has worked at the Academy for 35 years in the Physical Education/ Athletics department. In her photograph Oxford Bend Milky, she shows us a beautifully clear and starry night sky over a serene lake. She captured this photograph on the evening of a new moon in Wyoming. Of this piece she says "Although a new moon night carries no moonlight the stars light the way in the absence of light pollution. I find photographing the night challenging – sometimes daunting – but always captivating."



Jean Farnum, *Oxford Bend Milky*, 2015



Tad Nishimura, *Untitled* 2013

Farnum's photograph is one of many wonderful examples of photographs by members of our community.

**Tad Nishimura**, from the Class of 1945 Library, has worked at the Academy for 34 years. Her free form beaded necklace is one of the only examples of handcrafted jewelry in this exhibition. Nishimura has been bead weaving for about five years and three years ago she was introduced to a new beading technique called "free form peyote."

The piece pictured here was the first necklace she created using this new technique. The wonderful, organic loops and shapes created in this piece were not made using a pattern; instead these forms were determined by Nishimura's own imagination and the shape and size of the beads she chose.

**Rosanna Salcedo** has worked at the Academy for 15 years. She is currently the Dean of Multicultural Affairs and is also part of the Modern Languages department. Salcedo's painting, *Dahlias*, is oil on canvas. She enjoys the experimental quality of painting with oils and refers to painting as a "spiritual practice." Salcedo states, "When I paint, I am in a 'mindful' state, and it becomes a meditation."

#### Participating Artists:

**Dale Atkins**, Lamont Gallery. **Stephen Baldoumas**, Dining Services. **John Barton**'78, Summer School - Visual and Performing Arts. **Jennifer Benn**, Lamont Gallery. **John Blackwell**, Science. **Lara Bradford**, Mathematics. **Harold Brown**, Institutional Advancement. **Xitai Chen**, Mathematics. **Mary Frances Dagostino**, Assembly Program Coordinator and Lamont Gallery. **Nori Down**, Admissions. **Lori Dubois**, Finance. **Sarah Duclos**, Theater and Dance. **Stacey Durand**, Lamont Gallery. **Diane Fandrich**, ITS. **Jean Farnum**, Physical Education/ Athletics. **Christine Fell**, Alumni and Parent Relations. **Krystina Friedlander**, Religion (Spouse). **Alex Gendal**, Theatre and Dance. **Susan Gorackowski**, Communications.

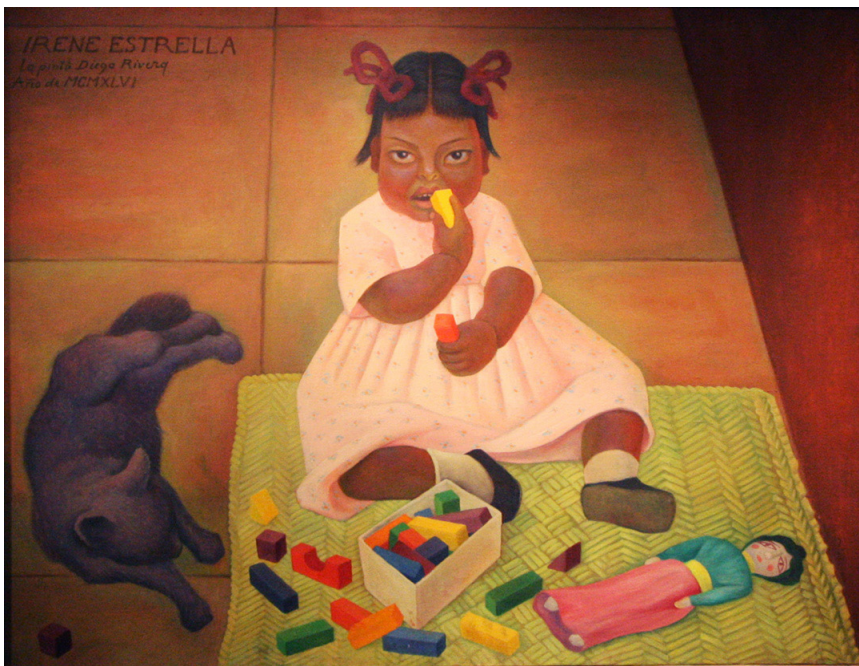


Rosanna Salcedo, *Dahlias*, 2013



**Elena Gosalvez Blanco**, Modern Languages and Summer School. **Aviva Halani**, Mathematics. **L. Gene Howard**, Art. **Fran Johnson**, Science. **Olivia Knauss**, Lamont Gallery. **Jung Mi Lee**, Music. **Joanne Lembo**, Student Activities. **Steve Lewis**, Art. **Christopher Lovely**, Art. **Danielle Lucero**, Office of Multicultural Affairs. **Donald McElreavy**, Athletics. **Kelly McGahie**, Student Activities. **Ann McGrath**, Library and Lamont Gallery. **Dolly Jo McPherson**, Institutional Advancement. **Tara Misenheimer**, Art. **Jim Morris**, Dining Services. **Tad Nishimura**, Library. **Nicole Pellaton**, Communications. **Fermín Pérez-Andreu**, Modern Languages. **Emma Phillips**, Mathematics. **Kathy Pottle**, ITS. **Sue Repko**, English. **Rob Richards**, Theater and Dance. **Jenna Riley**, Lamont Gallery and Library. **Jill Robinson**, Sustainability and Natural Resources. **Rosanna Salcedo**, Office of Multicultural Affairs. **Scott Saltman**, Science. **Beverly Schneider**, Institutional Advancement. **Tom Seidenberg**, Mathematics. **Lorissa Summermatter**, Theater and Dance. **Leslie Tufts**, Summer School. **Marissa Vitolo**, Summer School. **Gaye Vorkink**, Modern Languages. **Peter Vorkink**, Religion. **Cary Wendell**, Theater and Dance. **Malcolm Wesselink**, Physical Education.

### Also On View:



Diego Rivera, *Portrait of Irene Estrella*, 1946

The Lamont Gallery is pleased to announce the homecoming of **Diego Rivera's** *Portrait of Irene Estrella*. Gifted to the permanent collection in 1954 by Corliss Lamont '20, the painting has been on loan to the Boston Museum of Fine Arts since the late 70's and has been included in several traveling exhibitions.

The portrait not only holds a special place in this Mexican muralist's repertoire, but also in the history of the Lamont Gallery. While sitting for a portrait in Diego Rivera's studio in the summer of

1954, Corliss Lamont '20 discovered Irene Estrella and knew he must share it with his alma mater.

The painting will hang in the gallery for the first time in 36 years as part of the ***Hidden Treasures 4*** exhibition and its unveiling will kick off the Lamont Gallery's Collections Initiative.

*Lamont Gallery programs are supported in part by the Michael C. Rockefeller '56 Visiting Artists Fund.*