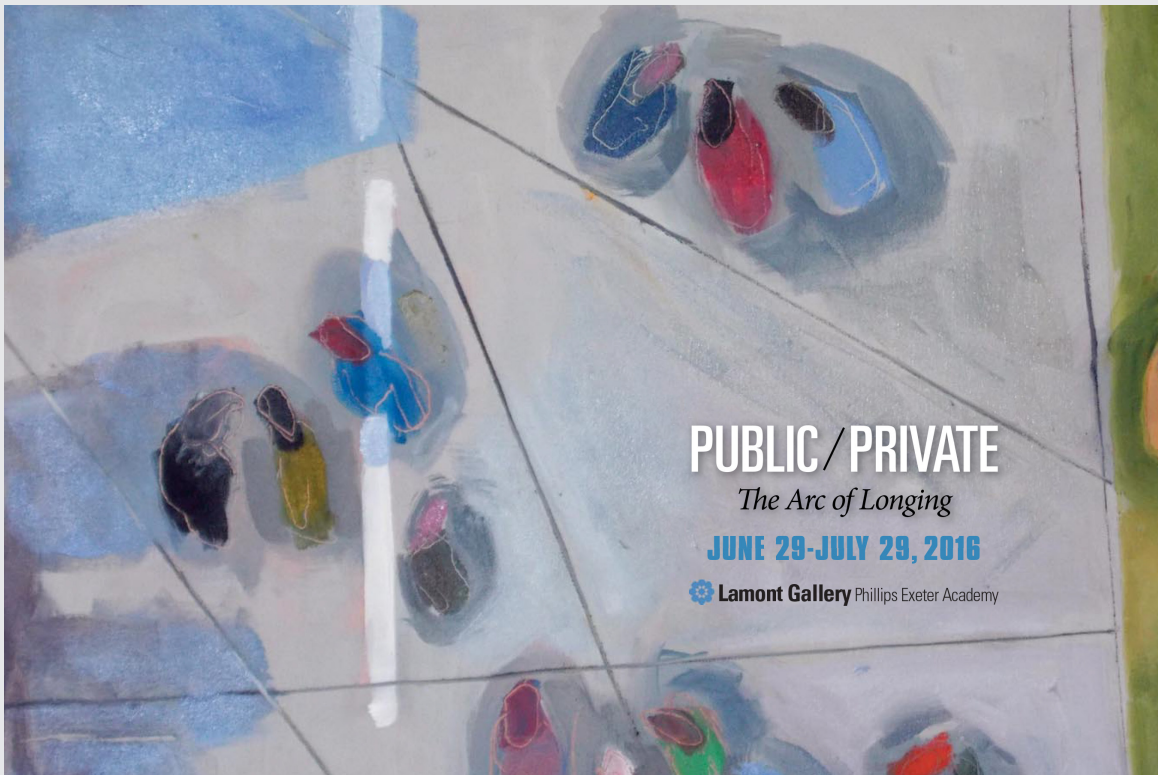




Lamont Gallery Exhibition Archive

Phillips Exeter Academy, Exeter NH
603-777-3461 | gallery@exeter.edu


www.exeter.edu/lamontgallery



PUBLIC / PRIVATE

The Arc of Longing

JUNE 29-JULY 29, 2016

 Lamont Gallery Phillips Exeter Academy

Public/Private: The Arc of Longing
June 29 - July 29, 2016

What type of face do we show in public? What posture do we adopt when we know we are safe and out-of-sight? Artists in ***Public/Private: The Arc of Longing*** explore the intersection between the public and the private, and how these two parts of ourselves overlap in unexpected ways. The work in Public/Private invites us to engage in close, attentive looking, both as a private act of contemplation, and through the shared experience of a communal event.

Becky Barsi highlights the emotional intimacy and frailty of the figure in her “gravity” series of photographic portraits.



Becky Barsi, *Masked*

Barsi states that she is “Drawn to the forms the body creates when pushed, pulled and pressed, I use gravity as a force to challenge a single conforming notion of beauty, to exaggerate weight, and shift the way we view the body.” Barsi has exhibited her work throughout the Northeast. She is a former PEA and Summer School arts faculty member and currently the Chair of the Creative Arts Department at The Derryfield School.



Amy Larimer, *Grieving Coats* (Photo by Hand Diaz-Leal)

Amy Larimer honors personal and community suffering through her “Grieving Coats.” This large-scale sculptural memorial includes over two-dozen, human sized coats made out of steel wool. “Serving as both a cocoon-like structure and a room-sized cloak, each Grieving Coat is created to represent and hold the arduous cycle of pain and emotional re-growth encountered while grieving. Conceptually, this piece is intended to be worn throughout the entire mourning process, serving to foster the individual while physically and viscerally representing a primal loss.” Larimer is the Assistant Director of the Architectural Design Program at Stanford University. She is also a PEA Summer School Faculty member and teaches in the Phillips Exeter Academy – Stanford University Collaboration: The Process of Creativity.

Madison May's charged, yet ambiguous mixed-media work delves into memory and personal trauma. May states “Examining the spaces we inhabit and proposing them as fortresses, my work addresses the potential desolation and deterioration of lives that are led in broken homes. I refer to these works as fortresses as they are emotionally challenging to confront and enter.” May, an accomplished printmaker, has received a number of awards for her work including the Jurors Pick Award for Michigan Emerging Graduate Artists Juried Exhibition (MEGA) 2016 at the Urban Institute for Contemporary Arts in Grand Rapids, Michigan.

Rachel Petruccillo's graphic portraits, curious and humorous, examine the assumptions we make about others. According to Petruccillo “Everything about us tells a story and we give a story to everything we see. Through portraiture, I explore the expressions, gestures and appearances that tell those stories. I draw portraits from photographs I take in public

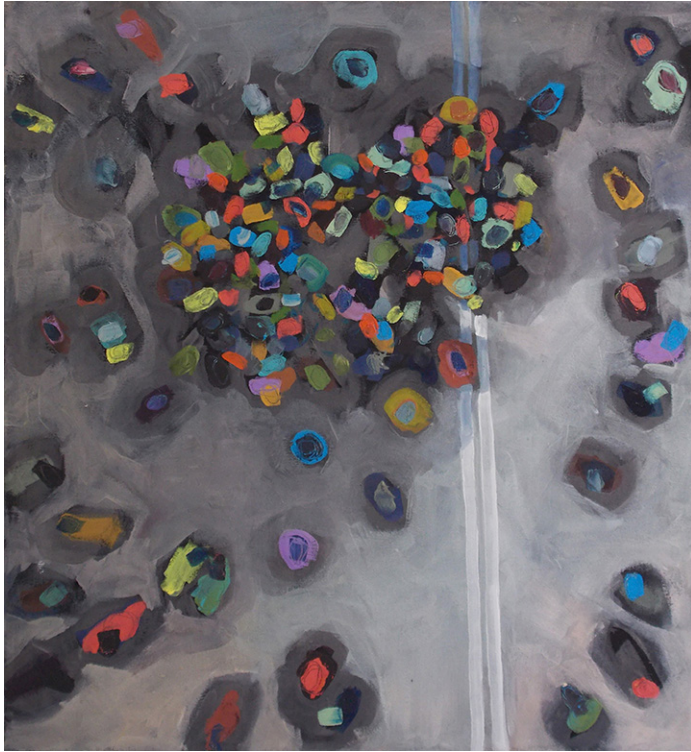


Madison May, 56

places, concealing the camera in an effort to capture people while they are unaware of being photographed. The portraits convey an emotion or reaction, which may be understood but cannot necessarily be named.” Petruccillo studied sculpture and printmaking and worked in the marketing industry. She currently lives and works in Rhode Island.



Rachel Petruccillo, *Pervençh “Periwinkle” - Meter Maid, Saint Germain, Paris*



Miranda Updike, *Black Cloud*

Miranda Updike’s colorful paintings capture the movement patterns of the crowd. According to Updike “In our times of technology, there is little online substitute for a public gathering of bodies and souls uniting in a common cause... There is loveliness to the accidental placement of people in the streets seen, say, from the fourteenth floor of a skyscraper - a littering of

colored shapes and shadows, which move above asphalt and street lines, express a brand of contemporary splendor.” Updike has shown her work in many exhibitions in and around Boston such as Bentley University, RSM Art Gallery and the Paula Estey Gallery.

Leah Woods’ carved and bent wood sculptures celebrate form and texture. Her large scale sculptures give “...form to feeling, creating a visual representation for a sensation and an experience that absolutely exists but has no tangible, physical presence.” The feeling the Woods is most interested in expressing is the hard to describe sense that we have all felt: that sense that there is something “in the air”.



Leah Woods, *Migration*

“This is the sentiment from where my work begins. Recognizing that something is happening, but uncertain as to whether that feeling is beginning, or ending, leading to a positive change, or potentially threatening. It is in this moment of recognition before a phenomena is analyzed and understood that my work seeks to exist.” Woods is an Associate Professor of Art at the University of New Hampshire where she teaches woodworking and furniture design classes. Here work has been shown in the Center for Design and Craftsmanship exhibitions in Cheltenham, England, the Cheongju Biennale exhibition in Korea, and at galleries in Boston and Philadelphia.

Also on View

Ben Putnam: The Process of Shaping of Texture

June 29 - July 29, 2016

PEA Summer School faculty Ben Putnam will showcase select works in ceramic and mixed media in this special spotlight exhibition. Putnam teaches ceramics and is the Art Department Chair at ConVal Regional High School. This summer he is an Associate Dean of Students at PEA's Summer School.

Summer School Art Show

Wednesday & Thursday, August 3 & 4

Come see the work from our Summer School student artists in this pop-up display.



Ben Putnam, *Some Sunday in July*

Related Links

Becky Barsi
Amy Larimer
Madison May
Rachel Petruccillo
Miranda Updike
Leah Woods
Ben Putnam
PEA Summer School
Article - Public/Private
Article in Summer Times

Interview - Becky Barsi
Interview - Madison May
Interview - Rachel Petriccillo
Interview - Ben Putnam
Interview - Miranda Updike
Interview - Leah Woods
Photos of the exhibition

Lamont Gallery programs are supported in part by the Michael C. Rockefeller '56 Visiting Artists Fund.